

**CITY OF NANAIMO
PRELIMINARY LAYOUT
ACCEPTANCE**

SCHEDULE "A"

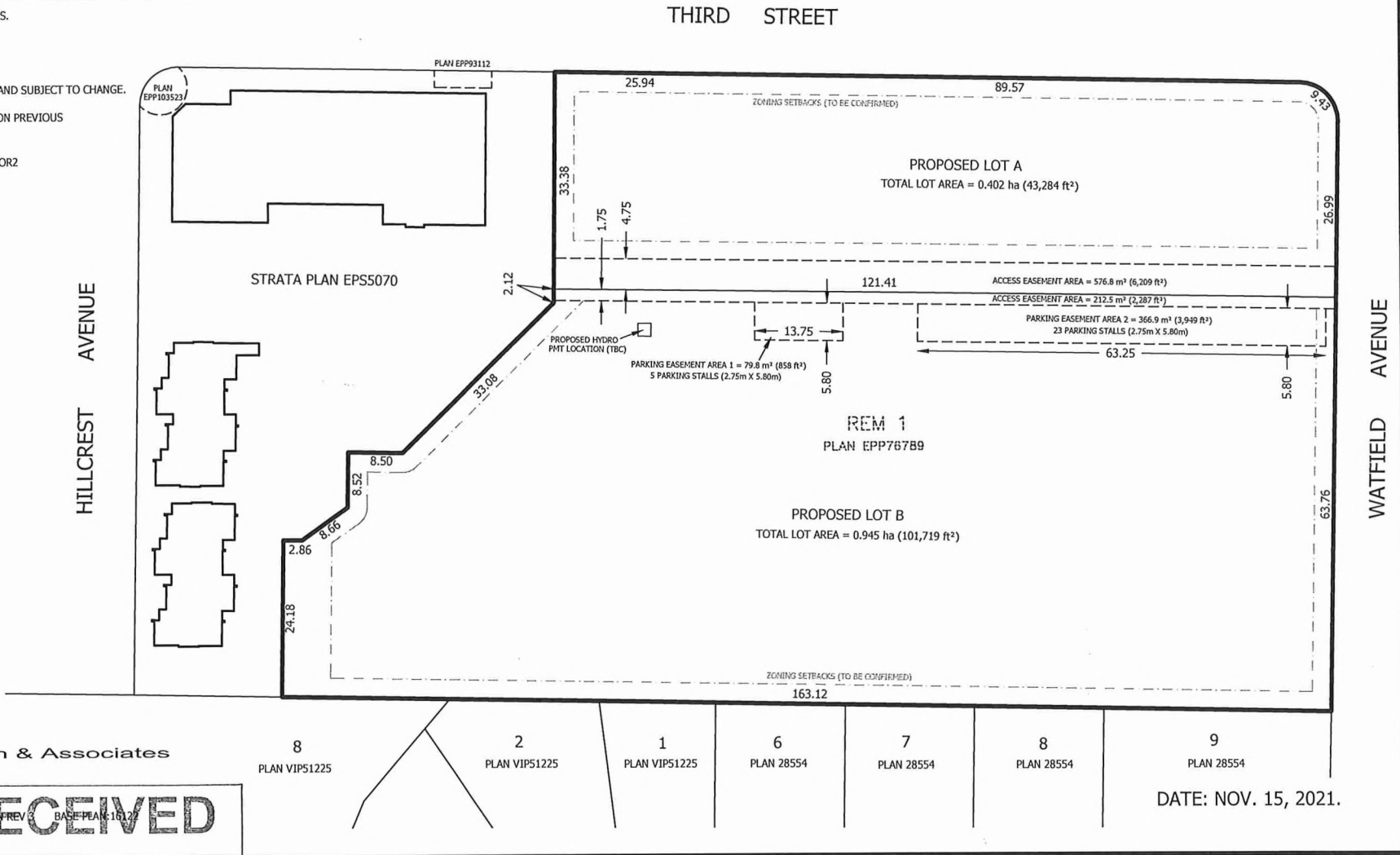
~~2022-AUG-31~~

Date 2023-AUG-31 *[Signature]*
 Approved By *[Signature]*
 SITE PLAN OF PROPOSED SUBDIVISION OF LOT 1, SECTION 1, NANAIMO DISTRICT, PLAN EPP76789, EXCEPT STRATA PLAN EPS5070



DISTANCES ARE IN METRES.

NOTES:
 AREAS ARE PRELIMINARY AND SUBJECT TO CHANGE.
 EASEMENT AREAS BASED ON PREVIOUS SITE DESIGN PLANS.
 CURRENT SITE ZONING: COR2



Williamson & Associates
 Professional Surveyors
 3088 Barons Road
 Nanaimo B.C. V9T 4B5
 FILE: 16122-21 SITE PLAN REV BASE PLAN 16122

RECEIVED

MAR 23 2022
 SUB01458
 CITY OF NANAIMO
 SUBDIVISION